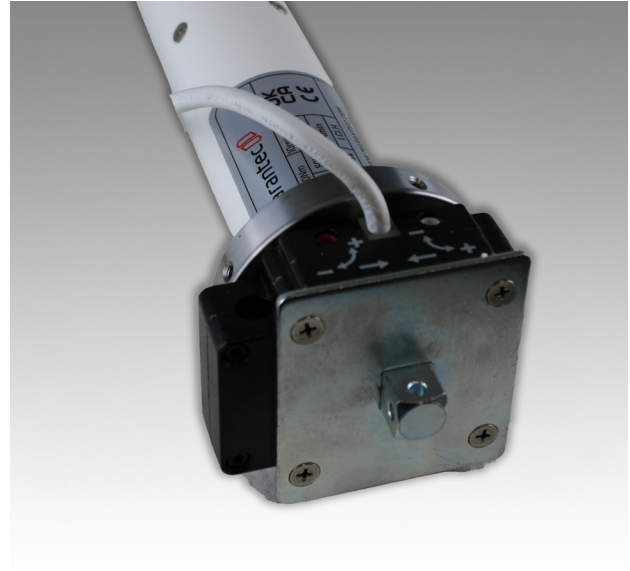


M1 150M Tubular Motor Datasheet

Product Information
Product Data



M1 150M Tubular Motor



Product Information

XP tubular motors are the driving force behind many roller shutters, awnings and garage doors. The products emit minimal noise when in operation, are easy to conceal, compact in size and a whisk to install. In European countries, the motor-moved roller shutters, awnings, sunshade and garage doors are widely used in offices, houses, hotels, restaurants, exhibition halls, and other public places.

To prolong its using life, the motor bears an over-heating protection device inside; it will stop automatically during long-time working with temperature rising too high and will resume operation when temperature comes down.

The M1/150M Tube Motor delivers powerful and reliable performance with a 150Nm torque and 10rpm speed, all housed in a compact 60mm diameter body. Manual override option available.

Technical Details

Technical Data	M1/ 150M
Torque	150 Nm
Power	390 W
Current	1.74A
Voltage	230V/ 50Hz
R.P.M	10/ min
Limit Turns	12
IP Rating	IP.44
Lifting Capacity	225kg

HATEK

marantec 
engineered for you

Certificate of Conformity

Certificate No. : HA0122NB103936EM
Applicant : Marantec UK Limited
Address : Unit 10 Christelton Court, Runcorn, Cheshire, WA7 1ST
Manufacturer : Marantec UK Limited
Address : Unit 10 Christelton Court, Runcorn, Cheshire, WA7 1ST
Product Name : Tubular Motor
Model No. : M1 / 150M
Technical Data : AC 230V, 50Hz, IP44, Class I

The above mentioned product has been tested and found to be in conformity with the below listed standards and the European Electromagnetic Compatibility Directive 2014/30/EU.

Test Standards

EN IEC 55014-1:2021
EN IEC 55014-2:2021
EN IEC 61000-3-2:2019+A1:2021
EN 61000-3-3:2013+A1:2019+A2:2021

This certificate of EMC compliance is based on an evaluation of a sample of the above mentioned product. It does not imply assessment of the series-production of the product. The CE mark as shown below can be used, under the responsibility of the manufacturer, after completion of an EC Declaration of Conformity and compliance with all relevant EC Directives.



Marantec UK Ltd.

Unit 10 Christleton Court, Manor Park, Runcorn, Cheshire, WA7 1ST

Tel: 01928 579 050 | Email: sales@marantec.co.uk | www.marantec.co.uk



Certificate of Conformity

Certificate No. : HA0122NB103937SF
Applicant : Marantec UK Limited
Address : Unit 10 Christelton Court, Runcorn, Cheshire, WA7 1ST
Manufacturer : Marantec UK Limited
Address : Unit 10 Christelton Court, Runcorn, Cheshire, WA7 1ST
Product Name : Tubular Motor
Model No. : M1 / 150M
Technical Data : AC 230V, 50Hz, IP44, Class I

The above mentioned product has been tested and found to be in conformity with the below listed standards and the Low Voltage Directive 2014/35/EU.

Test Standards

EN 60335-1:2012 + A11:2014+ A13:2017 + A1:2019 + A14:2019 + A2:2019 + A15:2021
EN 60335-2-97:2006 + A11:2008 + A2:2010+ A12:2015
EN 62233:2008

This certificate of LVD compliance is based on an evaluation of a sample of the above mentioned product. It does not imply assessment of the series-production of the product. The CE mark as shown below can be used, under the responsibility of the manufacturer, after completion of an EC Declaration of Conformity and compliance with all relevant EC Directives.



Marantec UK Ltd.

Unit 10 Christleton Court, Manor Park, Runcorn, Cheshire, WA7 1ST

Tel: 01928 579 050 | Email: sales@marantec.co.uk | www.marantec.co.uk