

# EXD Starter Datasheet

---

Product Information

Product Data

Product Dimensions

The flameproof enclosure sets the foundation for the design of control and distribution solutions for hazardous areas, from small terminal boxes through control stations to sophisticated control and distribution panels for complex machinery and major applications.



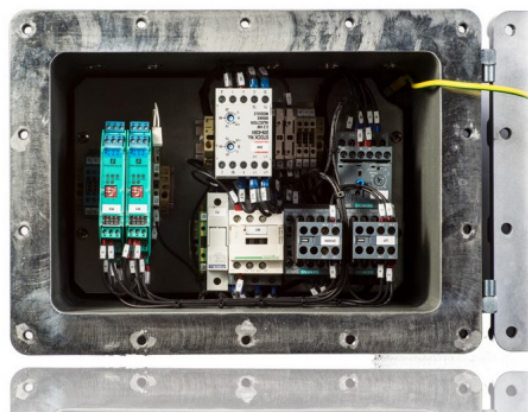
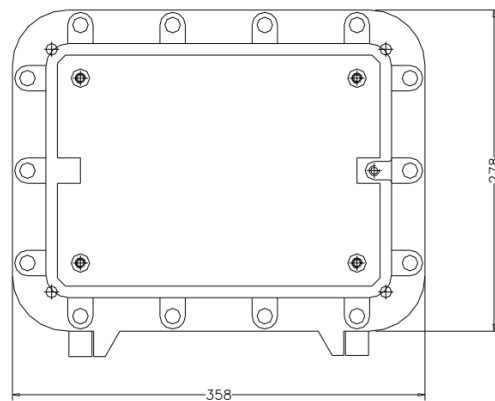
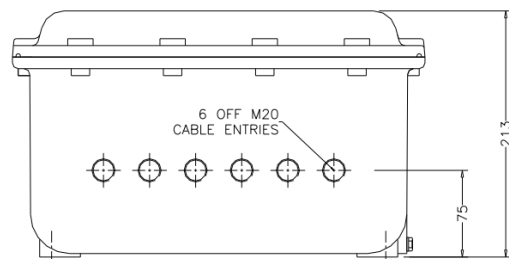
# EXD Starter

## Product Description

The EXD Starter is a high-performance, explosion-proof device designed for initiating operations in hazardous environments. Rated EExd, IIB, T6, it is ideally suited for use in ZONE 1 and 2 areas where explosive atmospheres are a concern. This starter features an intrinsically safe control circuit, ensuring safe operation even in potentially volatile conditions.

## Product Features

- EExd, IIB, T6 Rated
- Suitable For Zone 1 and 2
- Also IIC, T4 Available on Request
- Intrinsically Safe Control Circuit
- Impulse Open, Deadman Close



Please Contact Our Sales Department On 01928 579050 For Further Information