

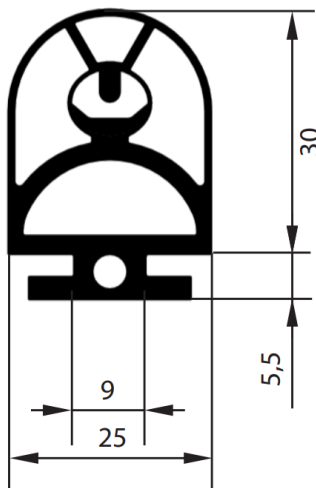
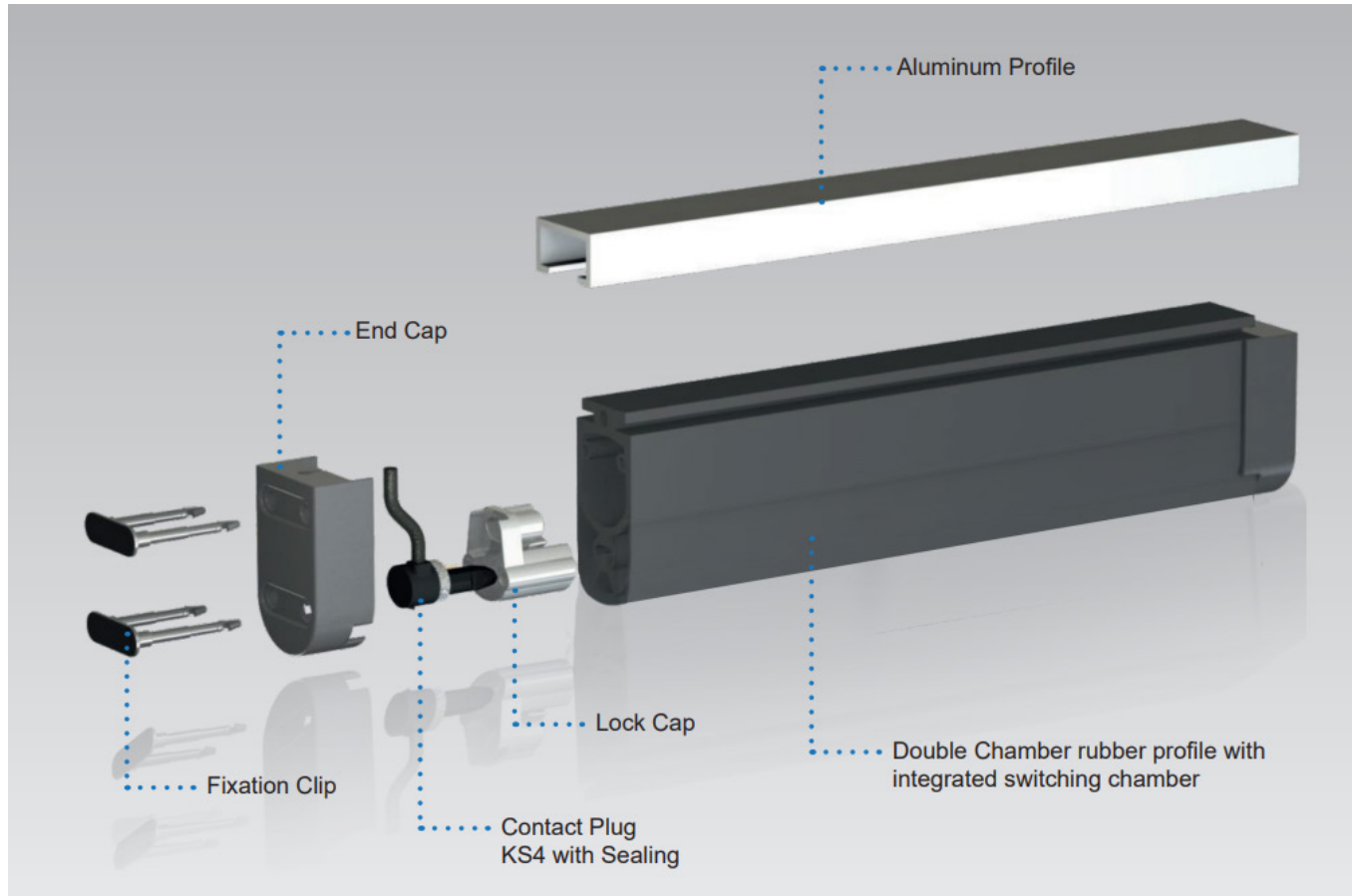
Conductive Safety Edge Datasheet

Product Information
Product Data



Conductive Safety Edge

The conductive safety edge is a pressure-sensitive sensor applied to ensure the safety of closing edges at potential crushing or shearing points which are prone to accidents. They may be installed on industrial automated doors and gates in order to protect individuals from bodily harm or vehicles and machinery from damage.



SENTIR Conductive Safety Edge

Dimensions	25mm(w)x30mm(h)
Certificates	To be certified by TÜV Nord Cert - according to DIN EN ISO 13856-2

Optional Extras (Not Included)

Aluminum Profile	SC.A
Rubber Channel	SC.RES

Technical Data

General Data	Conductive Safety Edge
Stock Code	COND-KIT, COND-KIT-RADIO*
Material	TPE
Material Hardness	68 Shore A
Delivery Length	25 m
Weight kg/m	0.34
Enclosure	IP 65 (IP 68 on request)
Mech. Force	500 N
Switching Cycles	10.000
Switching Angle	2 × 45°
Actuation Resistance	≤ 500 Ohm
Electrical Capacity	24V 100 mA
Operating Temperature	-10 °C - 55 °C
Max. Temperature Range	-25 °C - 75 °C
Max. Length of Several Contact Edges	100 m
Max Series Connection of the Contact Edges	5 Contact Strips
Inactive End Region with Higher Forces	30 mm
Connection Cables	LIY11Y 2×34mm
Cable Material	PUR Matte Black

*Includes rolling code radio receiver



Test-Speed 100 mm/s

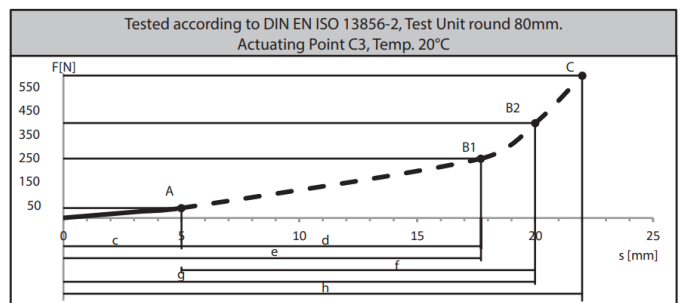
Actuation Force FA 42,3 N

Actuation Distance c 4,5 mm

Overtravel Distance d to 250 N 12,5 mm

Overtravel Distance f to 400 N 14,5 mm

Overtravel Distance h-c to 600 N 16,5 mm



Test-Speed 200 mm/s

Actuation Force FA 51,3 N

Actuation Distance c 5,5 mm

Overtravel Distance d to 250 N 11,5 mm

Overtravel Distance f to 400 N 13,5 mm

Overtravel Distance h-c to 600 N 15,5 mm

