

## Operation

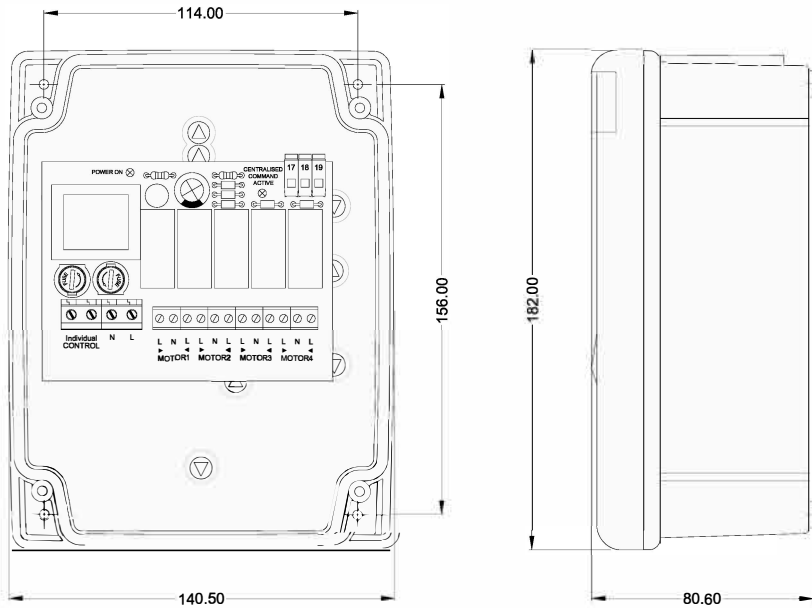
Master Switch: Enables all the tube motors to be operated simultaneously.

Individual Keyswitches: Enables individual operation of tube motors via their corresponding keyswitch.

## Installation Instructions

Mount the control panel and unscrew the lid, use the electrical instructions to wire the tube motor to the 4 way group controller, select from group or individual tube motor control.

## Panel Layout

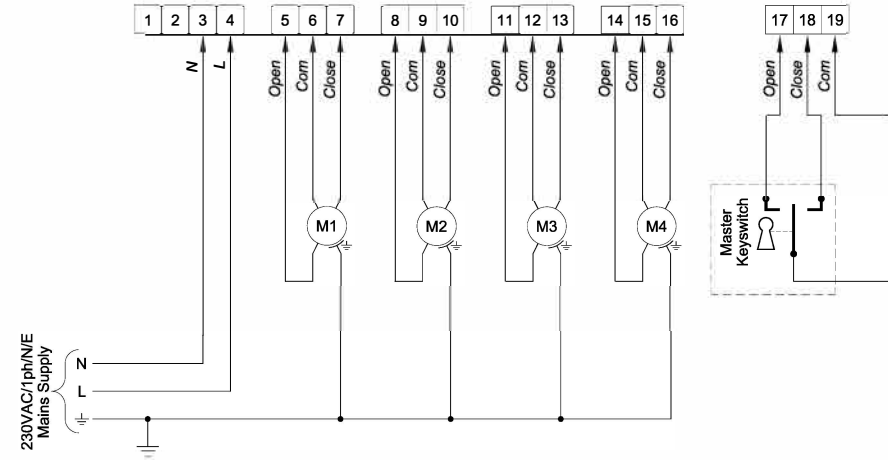


Overall Dimensions: 140.50×182.00×80.60mm

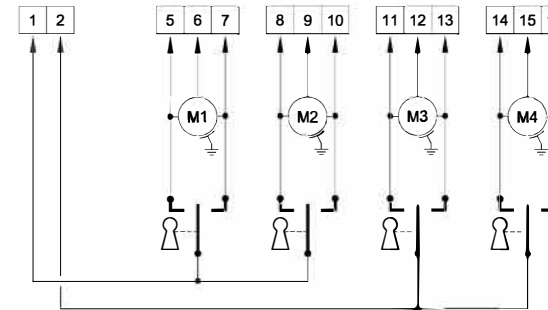
Mounting Hole Dimensions : 114.00×156.00mm

**WARNING!** Read these instructions **FULLY** before use. Installation should only be carried out by a **COMPETENT** installer.

## Wiring for Group Tube Motor Control...



## Wiring for Individual Tube Motor Control...



**Note:-** Connect ALL tube motor earth wires together and wire to ground.

**WARNING!** Activate only ONE Motor at a time.

1. Power Supply: Connect a 230VAC power supply, as shown.

2. Master Keyswitch: Connect as shown.

**Note:-** The maximum total motor load for the Group Control is 6.3A.

3. Connect the tube motors and individual keyswitches as shown.

**Note:-** If a tube motor operates in the wrong direction, swap the appropriate Black & Brown wires.

**Note:-** The maximum current for each output is 4A.