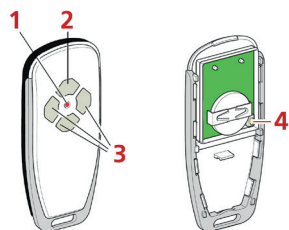


Transmitter

Digital 663 | Digital 633



Legend

1. LED
2. Status button
3. Command buttons (Channel 1 - 3)
4. Programming button

Functions

- › 3-Channel transmitter
- › Door status request
- › Driving direction signaling
- › Button lock

Express programming „radio“

- › Open „radio programming“ in express programming of the opener
- › Press programming button
- › LED (green) flashes
- › Press desired command button within 30 sec.
- › LED (red) lights up shortly
- › Quit express programming
- › Radio has been programmed

Programming „Transmitter learns Transmitter“

- › Press programming button at programmed transmitter
- › LED (green) flashes
- › Press programmed command button within 30 sec.
- › LED (red) lights up shortly
- › Radio programming mode of the opener will be opened
- › Press programming button at new to be programmed transmitter
- › LED (green) flashes
- › Press favoured command button within 30 sec.
- › LED (red) lights up shortly
- › Quit express programming
- › Radio has been programmed

Status request

- › Press status button
- › Press command button
- › LED (red) ON → door is OPEN
- › LED (red) flashes 4x → door runs in direction OPEN
- › LED (green) flashes 4x → door runs in direction CLOSE
- › LED (green) ON → door is CLOSED

Activating / deactivating button lock

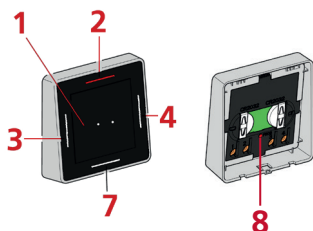
- › Press programming button for 5 sec.
- › activated: LED (red) lights up shortly 1x
- › deactivated: LED (red) lights up shortly 2x
- › Button lock has been activated / deactivated

Cancel button lock temporarily for operation

- › Press command button for 2 sec.
- › Button lock is revoked for 20 sec.

Interior push button

Digital 644



Legend

1. LEDs
2. Status button
3. Command button 1 (Channel 1)
4. Command button 2 (Channel 2)
7. Holiday button
8. Programming button

Functions

- › 2-Channel transmitter
- › Door status request
- › Driving direction signaling
- › Holiday mode
- › Conventional cabling of external push buttons

Activating / deactivating holiday mode

- › Press holiday button for 2 sec.
- › LEDs (red) ON
- › Activate: press desired command button within 30 sec.
- › LEDs (red) flash 2x
- › Opener-display shows symbol (switch)
- › Deactivate: press desired command button within 30 sec.
- › LEDs (green) flash 2x
- › Symbol (switch) disappears from opener-display
- › Holiday mode has been activated / deactivated

Express programming „radio“

- › Open „radio programming“ in express programming of the opener
- › Press programming button
- › LED (green) flashes
- › Press favoured command button within 30 sec.
- › LED (red) lights up shortly
- › Quit express programming
- › Radio has been programmed

Status request

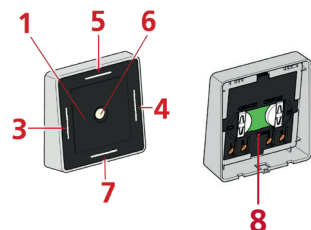
- › Press status button
- › Press command button
- › LED (red) ON → door is OPEN
- › LED (red) flashes 4x → door runs in direction OPEN
- › LED (green) flashes 4x → door runs in direction CLOSE
- › LED (green) ON → door is CLOSED

External push buttons

- › External push buttons can be wired on terminal 3/4 for channel 1 and terminal 1/2 for channel 2.

Interior push button

Digital 645



Legend

1. LEDs
3. Command button 1 (Channel 1)
4. Command button 2 (Channel 2)
5. Light button
6. Motion sensor
7. Holiday button
8. Programming button

Functions

- › 2-Channel transmitter
- › Light switch via motion sensor
- › Holiday mode
- › Conventional cabling of external push buttons

Activating / deactivating holiday mode

- › Press holiday button for 2 sec.
- › LEDs (red) ON
- › Activate: press desired command button within 30 sec.
- › LEDs (red) flash 2x
- › Opener-display shows symbol (switch)
- › Deactivate: press desired command button within 30 sec.
- › LEDs (green) flash 2x
- › Symbol (switch) disappears from opener-display
- › Holiday mode has been activated / deactivated

Express programming „radio“

- › Open „radio programming“ in express programming of the opener
- › Press programming button
- › LED (green) flashes
- › Press favoured command button within 30 sec.
- › LED (red) lights up shortly
- › Quit express programming
- › Radio has been programmed

Light function

- › Activation of light function (light button + motion sensor) is factory-set to command button 1.

Motion sensor

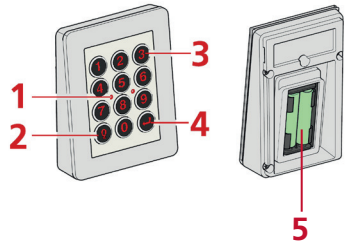
- › By passing the motion sensor the opener lighting is activated for 180 sec.
- › After activating the opener lighting, the motion sensor is deactivated for 180 sec. (energy saving mode).

External push buttons

- › External push buttons can be wired on terminal 3/4 for channel 1 and terminal 1/2 for channel 2.

Code keypad

Digital 525 | 526



Legende

1. LEDs
2. Light button
3. Digit buttons 0 - 9
4. Enter button
5. Batteries

Functions

- › 3 user PINs (Channel 1 - 3)
- › Changeable master PIN
- › Light control (Channel 4)
- › Temporary PIN 3x usable
- › Reset function

Express programming „radio“

- › Open „radio programming“ in express programming of the opener
- › Enter 4-digit master PIN
- › Press enter button
- › LEDs flash
- › Enter desired 4-digit PIN within 30 sec.
- › Press enter button
- › LEDs OFF
- › Quit express programming
- › Radio has been programmed

Changing master / user PIN

- › Enter 4-digit master PIN
- › Press enter button 2x
- › LEDs flash twice and slowly
- › Enter 4-digit master / user PIN to be changed within 30 sec.
- › Press enter button
- › LEDs flash twice and quickly
- › Enter new 4-digit master / user PIN within 30 sec.
- › Press enter button
- › LEDs ON for 2 sec.
- › Master / user PIN has been changed

Creating temporary PIN

- › Enter 4-digit master PIN
- › Press enter button 3x
- › LEDs flash triple and slowly
- › Enter learned user PIN within 30 sec.
- › Press enter button
- › LEDs flash triple and quickly
- › Enter desired 4-digit PIN within 30 sec.
- › Press enter button
- › LEDs ON for 2 sec.
- › Temporary PIN has been saved

Programming light function

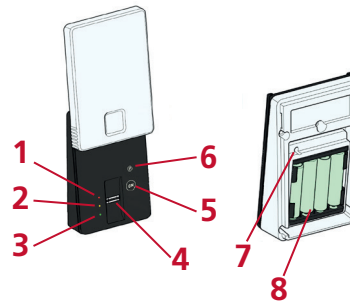
- › Open extended programming **Level 4, Menu 8** of the opener
- › Enter 4-digit master PIN
- › Press enter button
- › LEDs flash slowly
- › Press light button within 30 sec.
- › LEDs light up shortly
- › Light function has been saved

Reset

- › Remove one battery
- › Press and hold enter button
- › Insert battery
- › LEDs flicker shortly
- › Release enter button
- › LEDs ON for 2 sec.
- › Code keypad has been set to factory settings

Fingerprint reader

Digital 528



Legend

1. LED red
2. LED yellow
3. LED green
4. Reading module
5. Power button (ON)
6. Programming button
7. Back side programming button
8. Batteries

Functions

- › 20 user fingers for operation
- › 2 channels
- › Individual deleting of user fingers
- › Reset function

Programming master finger

- › Press power button (ON)
- › LED (red) flashes
- › Swipe master finger 1 across reading module within 20 sec.
- › LED (green) ON for 2 sec.
- › LED (red) flashes quickly
- › Swipe master finger 2 across reading module within 20 sec.
- › LED (green) ON for 2 sec.
- › LED (yellow) ON
- › Master finger 2 has been saved

Programming user finger

- › Press power button (ON)
- › LED (yellow) ON
- › Press programming button for 4 sec. within 20 sec.
- › LED (red) flashes slowly
- › LED (yellow) ON
- › Swipe master finger across reading module within 20 sec.
- › LED (red) flashes quickly
- › LED (yellow) ON
- › LED (green) ON for 2 sec.
- Optional: switching channel 1 ⇌ channel 2**
- Press programming button 1 sec.**
- › LED (red) flashes twice and quickly (Channel 2)
- › LED (yellow) ON
- › Switched to channel 2
- › Swipe user finger across reading module within 20 sec.
- › LED (green) ON for 2 sec.
- › Press programming button for 4 sec. within 20 sec.
- › LED (yellow) ON
- › 2 user fingers have been saved

Express programming „radio“

- › Open „radio programming“ in express programming of the opener
- › Press power button (ON)
- › LED (yellow) ON
- › Press back side programming button within 20 sec.
- › LED (yellow) flashes
- › Swipe master finger across reading module within 20 sec
- › LEDs (red/green) flash alternately
- › LED (yellow) ON
- › Swipe user finger across reading module within 20 sec.
- › LED (green) ON for 2 sec.
- › Device switches to operation mode
- › LED (yellow) ON
- › Quit express programming
- › Radio has been programmed

Actuating the function

- › Press power button (ON)
- › LED (yellow) ON
- › Swipe user finger across reading module within 20 sec.
- › LED (green) ON for 2 sec.
- › Function has been operated

Deleting user finger

- › Press power button (ON)
- › LED (yellow) ON
- › Press programming button for 4 sec. within 20 sec.
- › LED (red) flashes slowly
- › LED (yellow) ON
- › Press programming button for 4 sec. within 20 sec.
- › LED (red) flashes quickly
- › LED (yellow) flashes slowly
- › LED (yellow) ON
- › Swipe master finger across reading module within 20 sec.
- › LED (red) flashes quickly
- › LED (yellow) flashes quickly
- › Deleting user finger:
- › Swipe to be deleted user finger across reading module within 20 sec.
- › LED (green) ON for 2 sec.
- › User finger has been deleted
- › Deleting all user fingers:
- › press programming button
- › LED (green) ON for more than 2 sec.
- › All user fingers have been deleted

Reset

- › Remove one battery
- › Press and hold back side programming button
- › Insert battery
- › Release back side programming button
- › All LEDs light up
- › Fingerprint reader has been set to factory settings