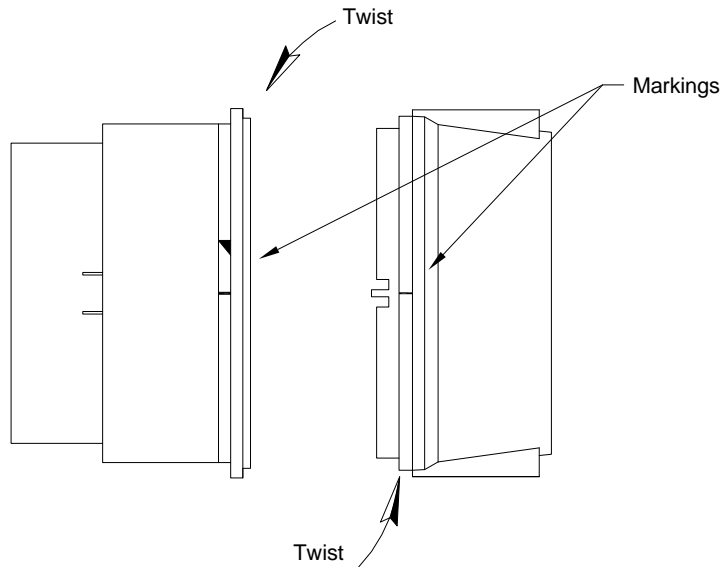
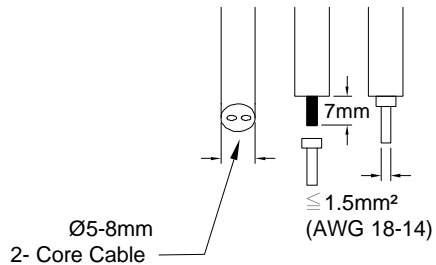


INSTRUCTIONS

1. Knock out all the appropriate holes using a screwdriver. Avoid damaging the base of the light.
2. Line up the markings and twist each base of the light in the direction of the arrows to lock/unlock it into position.



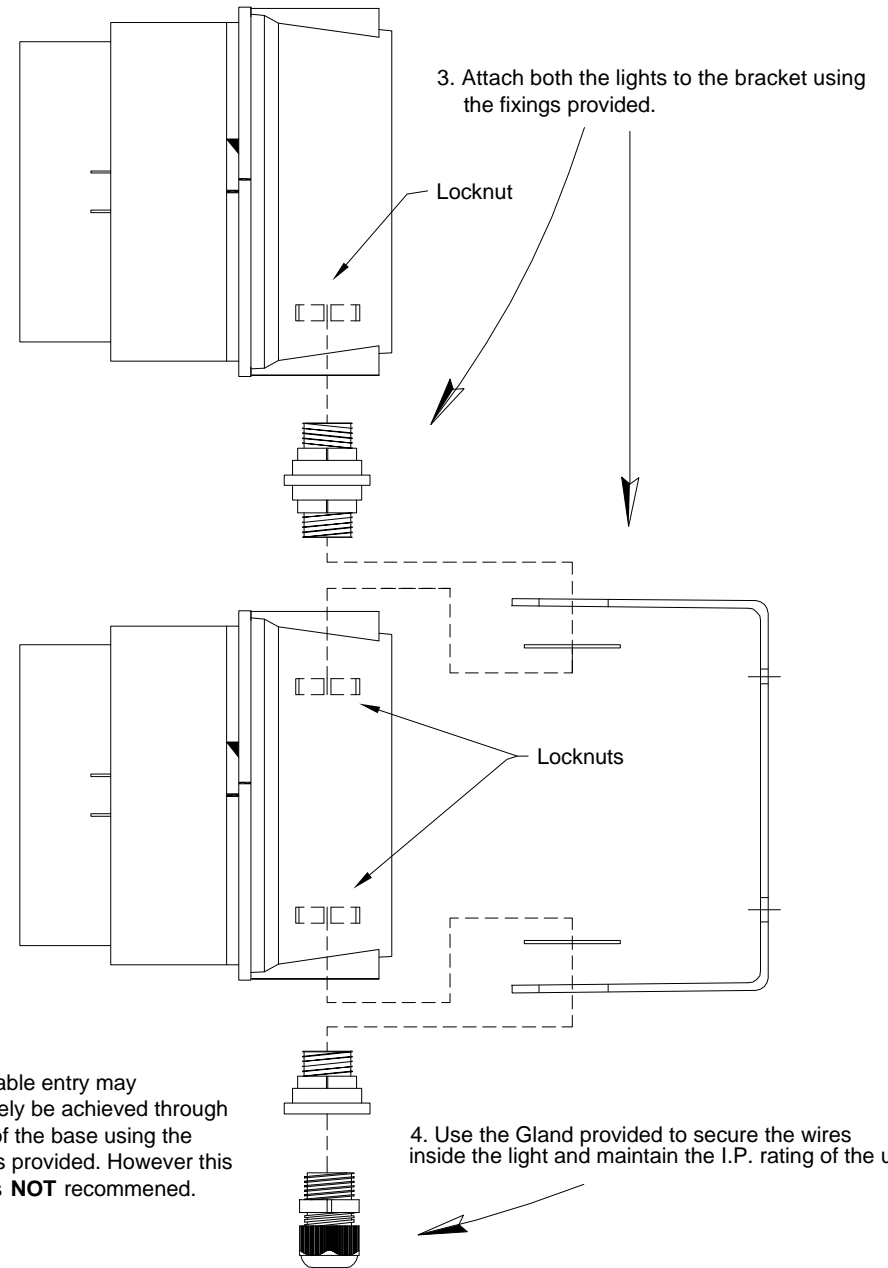
CABLE PREPARATION DETAILS



Note:- Cable entry is achieved via spring clamp terminals accessed at the base of the threaded lamp holder - this will have to be removed if it is already fixed in position

WARNING! Read these instructions **FULLY** before use. Installation should only be carried out by a **COMPETENT** installer.

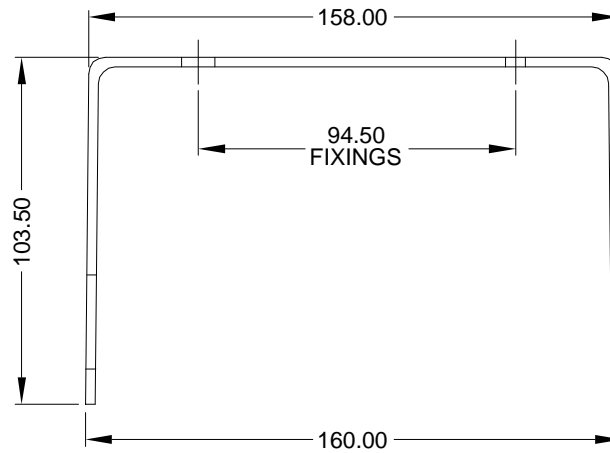
DISCLAIMER: Marantec UK Ltd. constantly strives to improve the quality of its goods and as such reserves the right to replace/modify products without prior notification. Any examples given are intended for guidance only.



Note:- Cable entry may alternatively be achieved through the rear of the base using the grommets provided. However this method is **NOT** recommended.

4. Use the Gland provided to secure the wires inside the light and maintain the I.P. rating of the unit.

TRAFFIC LIGHTS & BRACKET

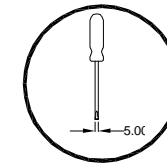
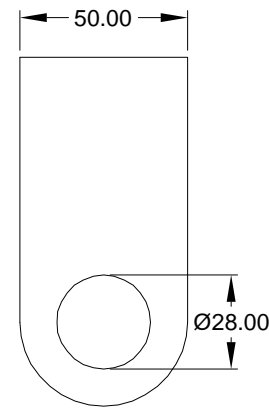


TECHNICAL DETAILS:

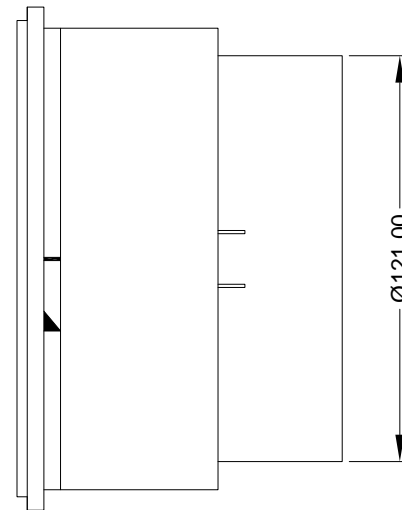
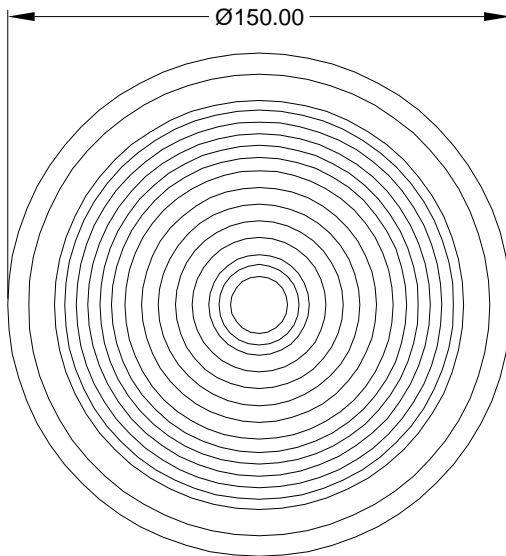
Typ 890 X00 00
 250V max
 25W max
 ta 50°C IP65

Note:-

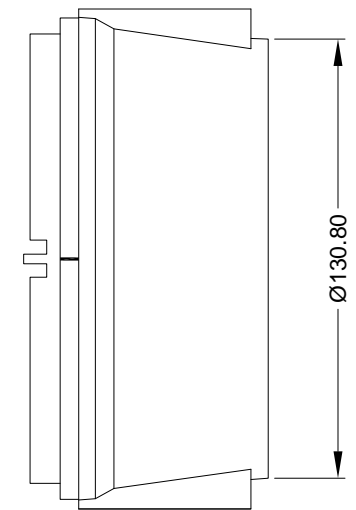
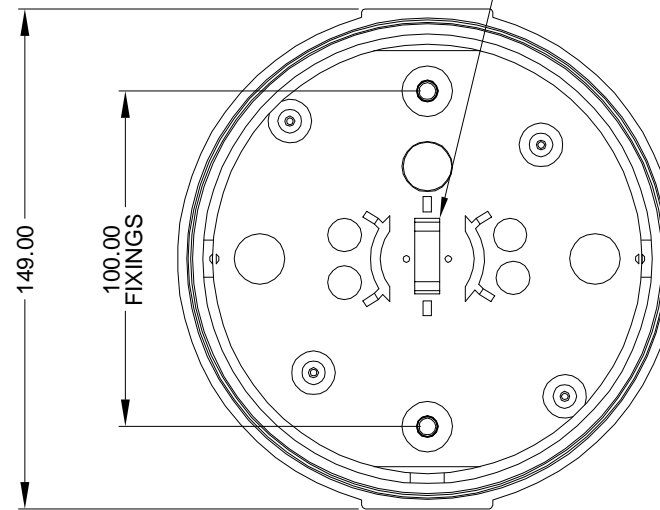
Threaded lamp holder is secured into base via 2 lever spring clamps. To remove lamp holder use a 5mm parallel tip flat blade screwdriver to carefully pry the holder loose. **Caution!** Do not apply too much pressure to the clamps to avoid snapping them.



LENS & HOOD



BASE



PACK INCLUDES:

2-Off Traffic lights: 1 Red and 1 Green
 1-Off Fixing Bracket & Fixings



Title:-

230VAC L.E.D. TRAFFIC LIGHTS
 (STOCK CODE: 33-6009)

Drawing No:- LC-2677

Page No:- 2 of 3

Revision No:-

Rev Date:-

Drawn By:- A.G.M.

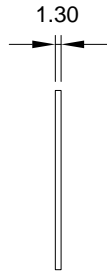
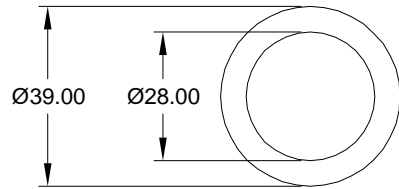
Date:- 22/04/05

Checked By:- S.B.P.

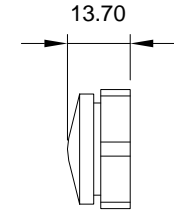
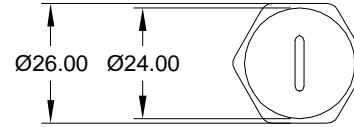
Appr' By:- S.L.

FIXINGS

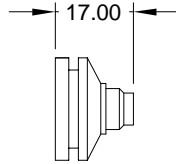
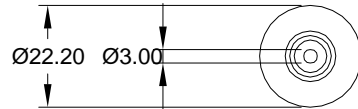
SELF ADHESIVE CUSHIONING WASHER (Quantity: 4-Off)



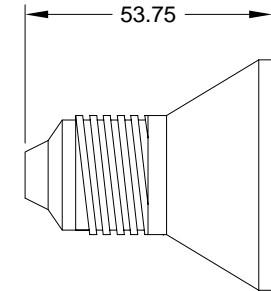
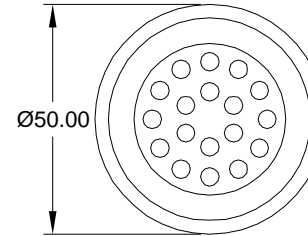
PG9 BLANKING PLUG (Quantity: 1-Off)



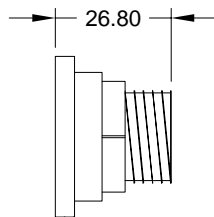
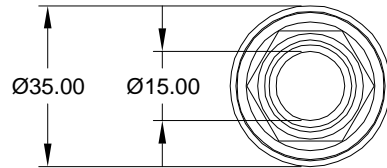
GROMMET (Quantity: 2-Off)



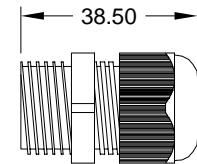
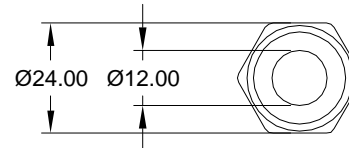
230VAC L.E.D. ARRAY LAMP (Quantity: 2-Off)



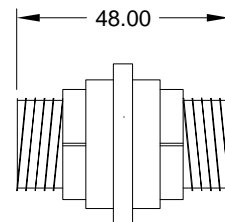
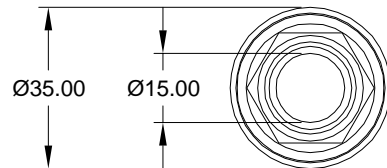
FEMALE-MALE STRAIGHT THREAD ADAPTER (Quantity: 2-Off)



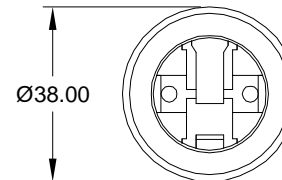
M20 GLAND (Quantity: 2-Off)



MALE-MALE STRAIGHT THREAD ADAPTER (Quantity: 1-Off)



THREADED LAMP HOLDER (Quantity 2-Off)



Spring Clamp
Terminals

